



# MEMBRANE REFERENCE GUIDE

Single-ply thermoplastic solutions for those who sell and install  
Duro-Last® Roofing Systems



# Edge-to-Edge & Deck-to-Sky™ Solutions

As a full system roofing provider, Duro-Last offers the widest range of thermoplastic single-ply membrane solutions. Whether you choose PVC custom-fabricated deck sheets or any of our PVC, KEE or TPO roll goods, we are committed to delivering a custom experience. From edge metal and drainage products, to flashings, fasteners, coatings and adhesives, a full line of insulation products, cover boards and vapor barriers, Duro-Last covers all your commercial roofing needs – from Edge-to-Edge & Deck-to-Sky.



## Enduring Legacy of Quality

"If we're going to manufacture a product, that product better be the best of its kind and do what it's supposed to do."

— John R Burt, Duro-Last founder



## The Custom Advantage

Duro-Last is the only single-ply manufacturer offering custom-fabrication of the entire roofing system, including custom-fabricated deck sheets\*, accessories and details, to precisely fit each building. And the trademark Duro-Last custom experience is part of every one of our roofing systems. With personalized customer service and technical representatives nationwide, we offer one-on-one service for every one-of-a-kind roof.

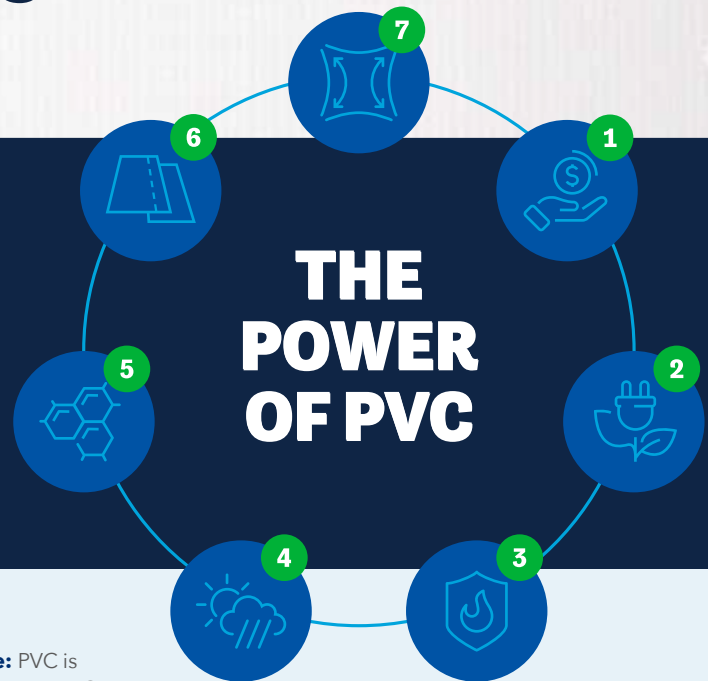
\* Deck sheets are available with the Duro-Last membrane.

# Membrane Highlights

High-performance membranes to meet the needs of every type of roof in every climate

## It Started With PVC and Our Flagship Membrane

First and foremost a PVC roofing manufacturer, Duro-Last is the only single-ply manufacturer offering custom-fabrication of the entire roofing system, including PVC accessories and details, to precisely fit each building. We stand firmly behind the power of PVC:



**1 High ROI:** PVC roofs provide excellent return on investment, with long-term performance, longer lifespan, lower energy costs and minimal maintenance.

**2 Energy efficiency and sustainability:** White PVC membranes are highly reflective and emissive, reducing cooling costs and the urban heat island effect in all climates. We prioritize waste reduction and recycling at every step of the product life cycle. Our innovative Recycle Your Roof program transforms old mechanically attached PVC roofing material into walkway pads, concrete expansion joints and durable flooring.

**3 Fire resistance:** PVC is inherently fire resistant. Our PVC membranes are also specially formulated to self-extinguish when exposed to flame, preventing the spread of fire across a rooftop.

**4 Weather resistance:** Duro-Last PVC delivers excellent long-term weathering and UV resistance, with nearly 50 years of proven performance.

**5 Chemical resistance:** PVC provides exceptional resistance to chemical attack, animal fats and grease. It is also resistant to inorganic acids, alkalis and salts, and other common corroding agents.

**6 Weldability:** Heat-weldable seams provide greater seam strength compared with taped seams, for long-term leak protection.

**7 Flexibility:** PVC is highly flexible, making it perfect for complex roofs, allowing for easier installation and protecting areas vulnerable to water intrusion and wind uplift.

## Installation Methods

### Standard Membranes

- **Adhered** to a variety of properly prepared roof decks, walls, cover boards and insulations including concrete, Duro-Guard® DensDeck® Prime Roof Board, Duro-Guard SECUROCK® Gypsum-Fiber Roof Board, DEXcell® Roof Board and Duro-Guard ISO products.
- **Mechanically fastened** to a variety of roof decks and wall materials. Our Duro-Bond® Induction Welding System also reduces fasteners, allows faster installations and prevents unwanted air intrusion.

### Fleece-Backed Membranes

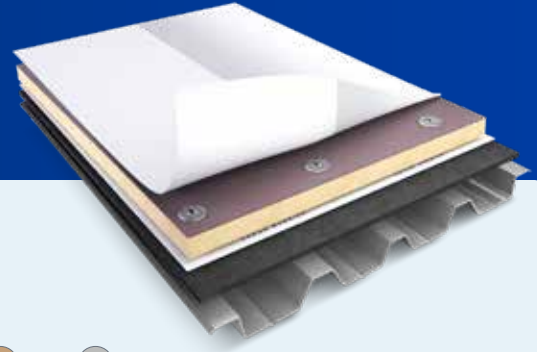
- **Adhered** to a variety of properly prepared roof decks, walls, cover boards and insulations including concrete, gypsum, lightweight concrete, DensDeck Prime Roof Board, SECUROCK Gypsum-Fiber Roof Board and Duro-Guard ISO products; may also adhere directly to an existing built-up roof by using Duro-Fleece® Adhesive or one of our spatter-applied Duro-Grip® adhesives.
- **Mechanically fastened** to a variety of roof decks and wall materials; an appropriate slip sheet or cover board may be required.

PVC

# Duro-Last Membrane

NSF/ANSI 347 Platinum

With nearly five decades of proven performance in the roofing industry, the Duro-Last PVC membrane is our flagship product.



PRODUCT SNAPSHOT



### Features

- PVC Membrane
- Custom-Fab Deck Sheets or Roll Good
- 40, 50 or 60 mil
- Roll Widths: 8", 12", 32", 64"
- Custom roll widths up to 5' 4" and length up to 240'
- Five Colors



### Warranty

- 15-Year to 25-Year NDL
- Consequential Damages
- 15- and 20-Year Hail and High Wind NDL
- Eligible for Basic, Ultra, Supreme and Residential

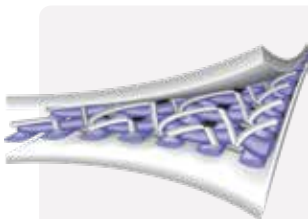


### Colors



## Differentiators

- Heart of our custom-fabricated system and the "World's Best Roof®"
- Factory-welded seams for better first-time quality installation and fewer callbacks
- Top layer thickness over scrim of Duro-Last 50 mil membrane is thicker than many of our competitors' 50 or 60 mil PVC membranes



All membranes offered by Duro-Last are composed of a top and bottom layer of thermoplastic film laminated to both sides of a high-strength, anti-wicking, weft-inserted polyester reinforcement scrim.

## 40 Mil – Ideal Applications

- Most flat or low-sloped applications
- Main Street North America – small businesses
- Niche applications such as warehouses, commercial refrigeration and coolers

## 50 and 60 Mil – Ideal Applications

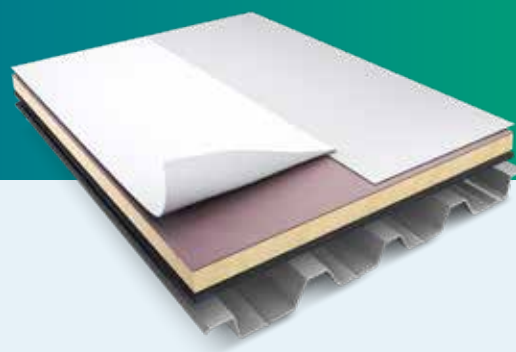
- Universal solution – delivers exceptional performance in applications from Main Street North America to specification markets
- Institutional (e.g., schools, universities, hospitals, senior living, museums, worship centers)
- Commercial (e.g., hotels, restaurants, retail, self-storage, office buildings, multifamily developments)
- Industrial (e.g., manufacturing facilities, food processing plants, cold storage, data centers, warehouses)

Mil	PVC Film Above Scrim	Weight	Scrim	Colors
40 mil	17 mil	0.22 lbs. per sq. ft.	18 x 14	White, tan, gray, dark gray
50 mil	28 mil	0.29 lbs. per sq. ft.	18 x 14	White, tan, gray, dark gray, terra cotta
60 mil	28 mil	0.36 lbs. per sq. ft.	18 x 14	White, tan, gray, dark gray

# Duro-Last X™

NSF/ANSI 347 Platinum

The Duro-Last X (DLX™) PVC membrane is produced in custom lengths up to 200' and is backed by the same proven performance as our flagship product line.



PRODUCT SNAPSHOT



### Features

- PVC Membrane
- Custom-Cut Roll Good
- 50, 60 or 80 mil
- Roll Widths: 10", 30", 5', 10'



### Warranty

- 15-Year to 30-Year NDL
- Consequential Damages
- 15- and 20-Year NDL Hail and High Wind
- Eligible for Basic, Ultra, Supreme and Residential



### Color



Matte White



## Differentiators

- Custom-cut rolls enable reduced installation labor, less waste and scrap, and fewer welds and T-patches
- Highly effective on adhered concrete deck installations and roof decks with minimal penetrations
- Excellent wind uplift resistance and hail performance
- The 10' rolls reduce welding and enable a quick, quiet, easy and predictable installation
- The installed membrane is smooth on the surface and aesthetically pleasing

## 50 and 60 Mil – Ideal Applications

- Adhered and induction welding
- Great for contractors who:
  - Prefer roll goods
  - Enjoy the benefits of custom-fabricated membrane and accessories
  - Seek to significantly reduce roll scrap and end welds

## 80 Mil – Ideal Applications

Intended for architect/specifier market

- Buildings with heavy roof traffic
- Industrial facilities
- Areas with rooftop industrial processing
- Manufacturing plants

### Duro-Last X Standard Roll Good Sizes\*

50 mil	10" x 100'	30" x 100'	5' x 100'	10' x 100'
60 mil	10" x 100'	30" x 100'	5' x 100'	10' x 100'
80 mil	10" x 65'	30" x 65'	5' x 65'	10' x 65'

\*Rolls may also be custom-cut to length (to nearest 6"; up to 200' in 50 and 60 mil, and 130' for 80 mil).

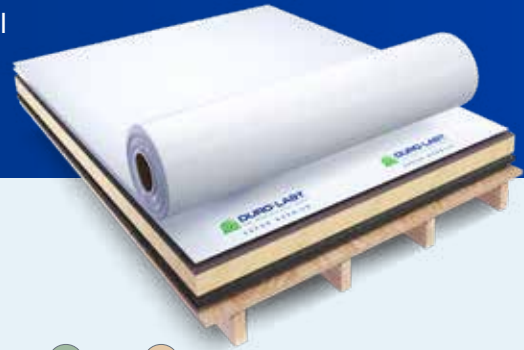
Mil	PVC Film Above Scrim	Weight	Scrim	Color
50 mil	28 mil	0.31 lbs. per sq. ft.	18 x 14	Matte white
60 mil	28 mil	0.36 lbs. per sq. ft.	18 x 14	
80 mil	38 mil	0.46 lbs. per sq. ft.	18 x 14	

PVC

# Duro-Tuff®

NSF/ANSI 347 Gold

The Duro-Tuff PVC membrane is designed to appeal to traditional roll good contractors and contractors looking for a more cost-effective and reliable sheet with superior membrane characteristics.



PRODUCT SNAPSHOT



### Features

- PVC Membrane
- Roll Good Only
- 50, 60 or 80 mil
- Roll Widths: 10", 30", 5', 10'
- 12 Vibrant Color Options



### Warranty

- 15-Year to 25-Year NDL
- 15- to 25-Year High Wind NDL
- Eligible for Basic, Ultra and Residential
- Product line does not include consequential damages



### Colors

- White
- Light Gray
- Patina
- Light Tan
- Charcoal
- Green
- Copper
- Blue
- Bright Red
- Colonial Red
- Midnight Bronze
- Brown



## Differentiators

- Impressive top layer thickness over scrim
- Excellent wind uplift resistance and hail performance
- The 10' rolls reduce welding and enable a quick, quiet, easy and predictable installation
- The installed membrane is smooth on the surface and aesthetically pleasing
- Uniform thickness over scrim provides high durability
- Unique to the industry, color membranes are the same color top and bottom (white membrane is gray on bottom)

### Duro-Tuff Roll Good Sizes

Mil	10" x 100'	30" x 100'	5' x 100'	10' x 100'
50 mil	10" x 100'	30" x 100'	5' x 100'	10' x 100'
60 mil	10" x 100'	30" x 100'	5' x 100'	10' x 100'
80 mil	10" x 65'	30" x 65'	5' x 65'	10' x 65'

## 50 Mil – Ideal Applications

- Great for contractors who:
  - Prefer roll goods
  - Enjoy the benefits of custom-fabricated flashings
- Industrial facilities
- Projects where roofing system price may be the most important factor

## 60 Mil – Ideal Applications

- Often specified in public works, e.g., government facilities
- Industrial facilities

## 80 Mil – Ideal Applications

Intended for architect/specifier market

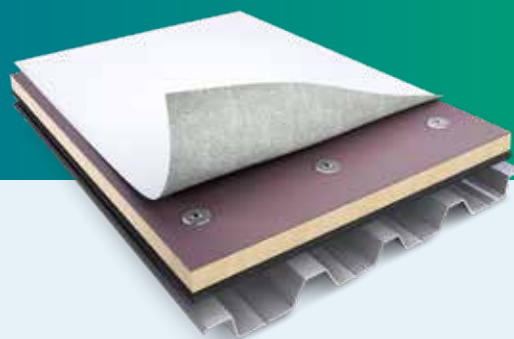
- Buildings with heavy roof traffic
- Industrial facilities and manufacturing plants
- Areas with rooftop industrial processing

Mil	PVC Film Above Scrim	Weight	Scrim	Colors
50 mil	26 mil	0.28 lbs. per sq. ft.	18 x 9	White, light gray, patina, light tan, charcoal, green, copper, blue, bright red, colonial red, midnight bronze and brown
60 mil	31 mil	0.35 lbs. per sq. ft.	18 x 9	
80 mil	41 mil	0.51 lbs. per sq. ft.	18 x 9	

# Duro-Fleece

NSF/ANSI 347 Gold

Duro-Fleece PVC membranes are ideal for use in adhered and mechanically fastened assemblies over a wide variety of roof substrates.



PRODUCT SNAPSHOT



### Features

- PVC Membrane with Fleece Underside
- Roll Good Only
- 50, 60 or 80 mil
- Roll Widths: 5', 10'
- 12 Vibrant Color Options



### Warranty

- 15-Year to 30-Year NDL
- 15- to 20-Year High Wind NDL
- Eligible for Basic, Ultra and Residential
- Product line does not include consequential damages



### Colors

- |            |              |                 |           |
|------------|--------------|-----------------|-----------|
|            |              |                 |           |
| White      | Light Gray   | Patina          | Light Tan |
|            |              |                 |           |
| Charcoal   | Green        | Copper          | Blue      |
|            |              |                 |           |
| Bright Red | Colonial Red | Midnight Bronze | Brown     |



## Differentiators

- Each membrane roll has one 3-inch selvage edge, without fleece, to enable rooftop hot-air welding to the adjacent membrane
- Highly effective on adhered concrete deck installations and roof decks with minimal penetrations
- Can be used over aged cap sheets, older BURs and modified bitumen, helping to reduce project material costs and speed up installations that would otherwise require an additional separator sheet
- Great for those looking for a quick, but effective, installation when used in conjunction with spatter-application of a Duro-Grip adhesive
- This membrane's 3.8-ounce-per-square-yard, needle-punched polypropylene fleece provides excellent properties for adhering or mechanically attaching to a variety of substrates
- The installed membrane is smooth on the surface and aesthetically pleasing

## Compatible for Direct Application With the Following Substrates:

- Structural concrete (poured in place or precast)
- Aged built-up roof (BUR)
- Gypsum (poured in place or precast)
- Lightweight concrete (insulating or cellular)

## Ideal Applications

Intended for architect/specifier market

- Flat and steep-slope applications
- Great for contractors who:
  - Prefer roll goods
  - Want to use high-quality fleece products

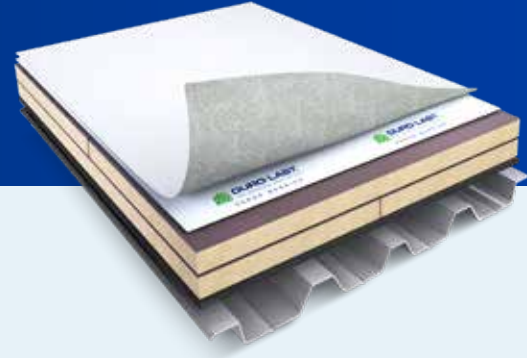
### Duro-Fleece Roll Good Sizes

Mil	5' x 100'	10' x 100'
50 mil	5' x 100'	10' x 100'
60 mil	5' x 100'	10' x 100'
80 mil	5' x 65'	10' x 65'

Mil	PVC Film Above Scrim	Overall Thickness With Fleece	Weight	Scrim	Colors
50 mil	26 mil	68 mil	0.33 lbs. per sq. ft.	18 x 9	White, light gray, patina, light tan, charcoal, green, copper, blue, bright red, colonial red, midnight bronze and brown
60 mil	31 mil	78 mil	0.39 lbs. per sq. ft.	18 x 9	
80 mil	41 mil	98 mil	0.53 lbs. per sq. ft.	18 x 9	

# Duro-Fleece Plus®

With a thicker fleece and higher-density scrim, Duro-Fleece Plus PVC is the premium fleece membrane product.



PRODUCT SNAPSHOT



### Features

- PVC Membrane with Premium Fleece on Underside
- Roll Good Only
- 50 or 60 mil
- Roll Widths: 5', 10'
- Available in Bright White; Additional Color Options by Special Order



### Warranty

- 15-Year to 30-Year NDL
- 15- and 20-Year Hail and High Wind NDL
- Consequential Damages
- Eligible for Basic, Ultra, Supreme and Residential



### Color



White

## Differentiators

- Robust overall thickness for maximum protection
- Highly effective on adhered concrete deck installations and roof decks with minimal penetrations
- Great wind uplift resistance when adhered
- Great for those looking for a quick, but effective, installation when used in conjunction with spatter-application of a Duro-Grip adhesive
- Can be used over aged cap sheets, older BURs and modified bitumen, helping to reduce project material costs and speed up installations that would otherwise require an additional separator sheet
- Provides durability against hail
- This membrane's 5.5-ounce-per-square-yard, needle-punched polypropylene fleece provides excellent properties for adhering or mechanically attaching to a variety of substrates
- Each membrane roll has one 3-inch selvage edge, without fleece, to enable rooftop hot-air welding to the adjacent membrane
- The installed membrane is smooth on the surface and aesthetically pleasing

## Compatible for Direct Application With the Following Substrates:

- Structural concrete (poured in place or precast)
- Aged built-up roof (BUR)
- Gypsum (poured in place or precast)
- Lightweight concrete (insulating or cellular)

## Ideal Applications

- Flat and steep-slope applications
- Great for contractors who:
  - Prefer roll goods
  - Want to use high-quality fleece products

### Duro-Fleece Plus Roll Good Sizes

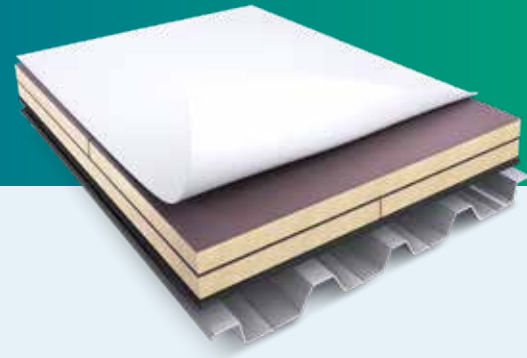
50 mil	5' x 100'	10' x 100'
60 mil	5' x 100'	10' x 100'

Mil	PVC Film Above Scrim	Overall Thickness With Fleece	Weight	Scrim	Color
50 mil	28 mil	80 mil	0.35 lbs. per sq. ft.	18 x 14	White
60 mil	32 mil	90 mil	0.40 lbs. per sq. ft.	18 x 14	

# Duro-Last EV and EV Fleece

NSF/ANSI 347 Gold (Duro-Last EV)

Duro-Last EV PVC membranes are excellent choices for projects requiring a long-lasting, energy-efficient roof membrane with chemical resistance.



**DURO-LAST  
EV**

*EV membranes are only compatible with EV membranes*

PRODUCT SNAPSHOT



### Features

- PVC KEE Membrane
- Roll Good Only
- 50, 60 or 80 mil (Duro-Last EV)  
60 or 80 mil (Duro-Last EV Fleece)
- Roll Widths:  
10", 30", 5', 10' (Duro-Last EV)  
5', 10' (Duro-Last EV Fleece)



### Warranty

- 15-Year to 30-Year NDL
- 15- to 20-Year High Wind NDL
- Eligible for Basic, Ultra and Residential
- Product line does not include consequential damages



### Color



## Differentiators

- Membranes containing ELVALOY™ ketone ethylene ester (KEE) polymer from Dow are increasingly being specified by architects
- Like the Duro-Last flagship PVC membrane, EV membranes remain flexible and weldable in low temperatures and can be installed effectively in cold weather; will continue to perform well in cold, harsh environments
- Installed membranes are smooth on the surface and aesthetically pleasing
- Duro-Last EV Fleece combines high-quality 5.5-oz. fleece material on the underside of the membrane with the proven performance of the Duro-Last EV roofing membrane

## Ideal Applications

Intended for architect/specifier market

- Great for contractors looking for a cost-effective, high-performing KEE-containing membrane

### Duro-Last EV Fleece Roll Good Sizes

60 mil	5" x 100'	10" x 100'
80 mil	5" x 100'	10" x 100'

### Duro-Last EV Roll Good Sizes

50 mil	10" x 100'	30" x 100'	5' x 100'	10' x 100'
60 mil	10" x 100'	30" x 100'	5' x 100'	10' x 100'
80 mil	10" x 100'	30" x 100'	5' x 100'	10' x 100'

Membrane	Mil	PVC Film Above Scrim	Overall Thickness With Fleece	Weight	Scrim	Color
Duro-Last EV	50 mil	25 mil	NA	0.28 lbs. per sq. ft.	18 x 9	White
Duro-Last EV	60 mil	28 mil	NA	0.30 lbs. per sq. ft.	18 x 9	
Duro-Last EV	80 mil	38 mil	NA	0.51 lbs. per sq. ft.	18 x 9	
Duro-Last EV Fleece	60 mil	28 mil	90 mil	0.39 lbs. per sq. ft.	18 x 9	
Duro-Last EV Fleece	80 mil	38 mil	110 mil	0.53 lbs. per sq. ft.	18 x 9	

# Duro-TECH™ and Duro-TECH Fleece

Duro-TECH and Duro-TECH Fleece are engineered to provide contractors with cost-effective, high-performance TPO roofing options.



*\*Duro-TECH Fleece only available in White  
TPO membranes are only compatible with TPO membranes*

PRODUCT SNAPSHOT



### Features

- TPO Membrane
- Roll Good Only
- 45, 60 or 80 mil
- Roll Widths:  
10", 30", 5', 10' (Duro-TECH)  
10' (Duro-TECH Fleece)
- Thickest performance layer, anti-wicking scrim, no seam sealant needed



### Warranty

- 15-Year to 25-Year NDL
- 15- and 20-Year Hail and High Wind NDL
- Eligible for Basic, Ultra and Residential
- Product line does not include consequential damages



### Colors

- White\*
- Tan
- Gray

## Differentiators

- Weft-inserted 9-by-9 threads per inch anti-wicking scrim – eliminating the need for seam sealant where membranes meet because the anti-wicking scrim prevents moisture from being pulled under the membrane
- Impressive top layer thickness over scrim – the most robust TPO performance layer in the industry at all membrane thicknesses
- Duro-TECH Fleece combines the Duro-TECH TPO membrane with an 8-ounce-per-square-yard high-quality fleece material on the underside for enhanced puncture protection
- Duro-TECH and Duro-TECH Fleece installations receive Duro-Last's trademark custom experience, including a complete spectrum of engineering services, technical and quality assurance support

## Ideal Applications

- Great for contractors who:
  - Are part of Duro-Last's authorized contractor network and are looking for high-quality, more reliable TPO roof good solutions
  - Enjoy the benefits of custom-fabricated flashings and Duro-Last's custom experience
- Projects where the price of the roofing system may be the most important factor

Duro-TECH Fleece Roll Good Sizes	
45 mil	10' x 100'
60 mil	10' x 100'
80 mil	10' x 50'

Duro-TECH Roll Good Sizes				
45 mil	10" x 100'	30" x 100'	5' x 100'	10' x 100'
60 mil	10" x 100'	30" x 100'	5' x 100'	10' x 100'
80 mil	10" x 100'	30" x 100'	5' x 100'	10' x 100'

Membrane	Mil	TPO Film Above Scrim	Overall Thickness With Fleece	Weight	Scrim	Colors
Duro-TECH	45 mil	21 mil	NA	0.23 lbs. per sq. ft.	9 x 9	Top - White, Tan and Gray Bottom - Gray
Duro-TECH	60 mil	30 mil	NA	0.31 lbs. per sq. ft.	9 x 9	
Duro-TECH	80 mil	37 mil	NA	0.42 lbs. per sq. ft.	9 x 9	
Duro-TECH Fleece	45 mil	21 mil	100 mil	0.27 lbs. per sq. ft.	9 x 9	Top - White Bottom - Light Blue
Duro-TECH Fleece	60 mil	30 mil	115 mil	0.32 lbs. per sq. ft.	9 x 9	
Duro-TECH Fleece	80 mil	37 mil	135 mil	0.38 lbs. per sq. ft.	9 x 9	

# Duro-Last Warranties

**Supreme Warranties:** These warranties include consequential damage for the first 15 years.



**SUPREME**

Warranty Name	Membranes Covered	Min. Mil	Border Color
15-Year NDL Warranty	Duro-Last; Duro-Last X; Duro-Fleece Plus	40 mil	Green
20-Year NDL Warranty, 15-Year Consequential Damage Coverage and an Additional 5-Year Material	Duro-Last; Duro-Last X; Duro-Fleece Plus	50 mil	Orange
20-Year NDL Warranty, 15-Year Consequential Damage Coverage and an Additional 5-Year Labor and Material	Duro-Last; Duro-Last X; Duro-Fleece Plus	50 mil	Purple

**Ultra Warranties:** Performance warranties cover material and labor, but do not include consequential damages.



**ULTRA**

Warranty Name	Membranes Covered	Min. Mil	Border Color
15-Year NDL Hail Warranty	Duro-Last; Duro-Last X; Duro-Fleece Plus; Duro-TECH; Duro-TECH Fleece	50 mil PVC 60 mil TPO	Brown
15-Year NDL Hail and High Wind Warranty <sup>(1)(2)(3)</sup>	Duro-Last; Duro-Last X; Duro-Fleece Plus; Duro-TECH; Duro-TECH Fleece	50 mil PVC 60 mil TPO	Yellow/Brown
15-Year NDL High Wind Warranty <sup>(1)(2)</sup>	Duro-Last; Duro-Last X; Duro-Fleece; Duro-Fleece Plus; Duro-Tuff; Duro-Last EV; Duro-Last EV Fleece; Duro-TECH; Duro-TECH Fleece	40 mil PVC 45 mil TPO	Yellow
20-Year NDL High Wind Warranty <sup>(1)(2)</sup>	Duro-Last; Duro-Last X; Duro-Fleece; Duro-Fleece Plus; Duro-Tuff; Duro-Last EV; Duro-Last EV Fleece; Duro-TECH; Duro-TECH Fleece	50 mil PVC 60 mil TPO	Fuchsia

**Basic Warranties:** Warranties do not include consequential damages.



**BASIC**

Warranty Name	Membranes Covered	Min. Mil	Border Color
15-Year NDL Warranty	Duro-Last; Duro-Last X; Duro-Fleece; Duro-Fleece Plus; Duro-Tuff; Duro-Last EV; Duro-Last EV Fleece; Duro-TECH; Duro-TECH Fleece	40 mil PVC 45 mil TPO	Burgundy
20-Year NDL Warranty	Duro-Last; Duro-Last X; Duro-Fleece; Duro-Fleece Plus; Duro-Tuff; Duro-Last EV; Duro-Last EV Fleece; Duro-TECH; Duro-TECH Fleece	50 mil PVC 60 mil TPO	Blue
25-Year NDL Warranty <sup>(4)</sup>	Duro-Last; Duro-Last X; Duro-Fleece; Duro-Fleece Plus; Duro-Tuff; Duro-Last EV; Duro-Last EV Fleece; Duro-TECH; Duro-TECH Fleece	60 mil PVC 80 mil TPO	Yellow/Green
30-Year NDL Warranty <sup>(4)</sup>	Duro-Last; Duro-Last X; Duro-Fleece; Duro-Fleece Plus; Duro-Tuff; Duro-Last EV; Duro-Last EV Fleece	80 mil	Orange/Red

**Residential Warranties:** Warranties do not include consequential damages. Material-only warranties.



**RESIDENTIAL**

Warranty Name	Membranes Covered	Min. Mil	Border Color
15-Year Residential	Duro-Last; Duro-Last X; Duro-Fleece; Duro-Fleece Plus; Duro-Tuff; Duro-Last EV; Duro-Last EV Fleece; Duro-TECH; Duro-TECH Fleece	40 mil PVC 45 mil TPO	Pink
20-Year Residential	Duro-Last; Duro-Last X; Duro-Fleece; Duro-Fleece Plus; Duro-Tuff; Duro-Last EV; Duro-Last EV Fleece; Duro-TECH; Duro-TECH Fleece	50 mil PVC 60 mil TPO	Pink/Blue

(1) Engineering preapproval is required. Duro-Last must supply all products.

(2) Warranty coverage for 55 mph and higher wind speeds require a High Wind Warranty Letter of Intent from Engineering Services.

(3) Warranty coverage requires a Hail Wind Warranty Letter of Intent from Engineering Services.

(4) Issued with accompanying Care and Maintenance Guide, which must be followed for the life of the warranty.



**Enterprise High School**  
Palmer Roofing

## The Duro-Last Difference

Since 1978, billions of square feet of Duro-Last Roofing Systems have been installed throughout North America. We proudly stand by every square foot with our best-in-class warranties, unwavering dedication to quality and culture of continuing innovation to solve our customers' toughest roofing challenges.



### Online Roof Selector Tool

Find the roofing system that's best for you with our roof selector tool.

Visit [duro-last.com/roof-selector](https://duro-last.com/roof-selector) to get started.



For more information, give us a call or visit our website.  
**800.248.0280**

[duro-last.com](https://duro-last.com)

Duro-Last is a brand of Amrize Building Envelope LLC.  
"Duro-Last", the "World's Best Roof", "Duro-Guard", "Duro-Tuff", "Duro-Fleece", "Duro-Fleece Plus", "Duro-Bond", "Duro-Grip", "Edge-to-Edge & Deck-to-Sky", "Duro-Last X", "DLX" and "Duro-TECH" are trademarks in the Amrize portfolio.  
"DensDeck" is a registered trademark owned by Georgia-Pacific Gypsum LLC.  
"SECUROCK" is a registered trademark owned by USG Corporation.  
"DEXcell" is a registered trademark owned by National Gypsum Corporation.  
"ELVALOY" is a trademark of The Dow Chemical Company or an affiliated company of Dow.  
Membrane Reference Guide ORIG: 6.7.16 REV: 10.3.25 - DL090007

