

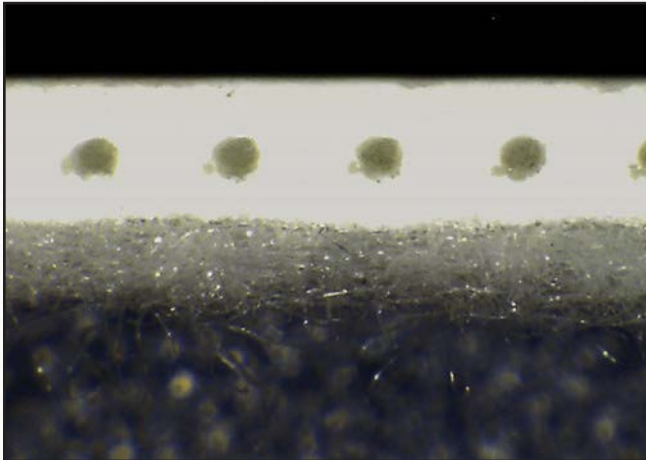


Duro-Fleece Membrane:

Duro-Fleece combines a PVC thermoplastic membrane and a high-quality fleece material on the underside of the membrane. Our Duro-Fleece membranes are an ideal product for use in adhered and mechanically fastened applications over a wide variety of roof substrates. Available in 50, 60 or 80 mil thicknesses, Duro-Fleece features a variety of color options and a complete line of custom-fabricated accessories to complement and enhance installation efficiencies of the roofing system.

Duro-Fleece Plus:

Using the Duro-Last formulation with a thicker fleece underside for more resistant protection and higher density scrim, Duro-Fleece Plus is a premium fleece membrane product. Available in 50 or 60 mil thicknesses, Duro-Fleece Plus is only available in the bright white color option. Once adhered or mechanically fastened, Duro-Fleece Plus is smooth on the surface and aesthetically pleasing.



Wider rolls improve installation efficiency:

Both Duro-Fleece and Duro-Fleece Plus are available in 10-foot wide rolls with a 3-inch selvage edge for easy heat welding, further reducing rooftop seaming compared to traditional roll good membranes.

Duro-Fleece and Duro-Fleece Plus roll goods can be applied using a variety of methods:

- Adhered: Duro-Last offers several adhesive options for applying the roof membrane to the deck surface.
- Mechanical Attachment: Fasteners and plates are used to securely attach sections of membrane to the roof deck. Duro-Fleece and Duro-Fleece Plus membranes can be mechanically fastened to existing asphalt roofing systems without a slipsheet, providing additional labor and money savings.



Comprehensive Warranty Coverage:

Multiple warranty options for Duro-Fleece and Duro-Fleece Plus installations are available, including our Basic, Ultra and Residential warranties. Additionally, Duro-Fleece Plus is eligible for our Supreme warranty option. Both Duro-Fleece and Duro-Fleece Plus are also eligible for high-wind warranties while Duro-Fleece Plus is eligible for hail warranties.

Precision-Fabricated Accessories:

Duro-Fleece and Duro-Fleece Plus have their own complete line of compatible custom-fabricated flashings, skirted edge metal made by EXCEPTIONAL® Metals and other roofing system components. Custom-fabricated flashings are manufactured with Duro-Last membrane material and feature a weft-inserted scrim which provides puncture and tear resistance along with tensile strength at transitions – the most critical areas of any roof installation.

Color Swatches:



*Duro-Fleece Plus only available in White

DURO-FLEECE MEMBRANE			
MIL	50	60	80
Weight	0.33 lbs./sq. ft.	0.39 lbs./sq. ft.	0.53 lbs./sq. ft.
Scrim	18 x 9	18 x 9	18 x 9
Available Roll Length	100'	100'	65'
Available Roll Widths	5', 10'	5', 10'	5', 10'
PVC Film Above Scrim	26 mil	31 mil	41 mil
Overall Thickness with Fleece	68 mil	78 mil	98 mil

DURO-FLEECE PLUS MEMBRANE		
MIL	50	60
Weight	0.35 lbs./sq. ft.	0.40 lbs./sq. ft.
Scrim	18 x 14	18 x 14
Available Roll Length	100'	100'
Available Roll Widths	5', 10'	5', 10'
PVC Film Above Scrim	28 mil	32 mil
Overall Thickness with Fleece	80 mil	90 mil



For more information give us a call or visit our website today.

800.248.0280

duro-last.com