

EDGE METAL & ACCESSORIES

LOW-GLOSS COLOR CHART



Snow White



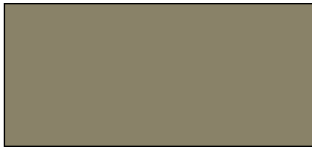
Bone White



Almond



Light Stone



Brownstone



Medium Bronze



Koko Brown



Midnight Bronze



Tundra



Slate Gray



Hawaiian Blue



Harbor Blue



Natural Patina



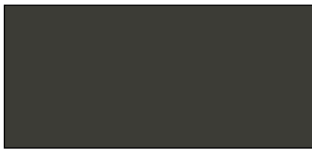
Classic Green



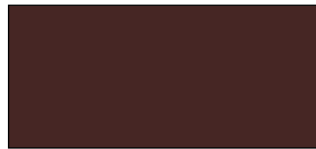
Hunter Green



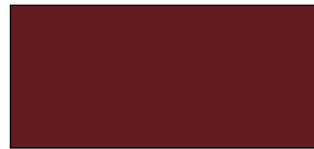
Coal Black



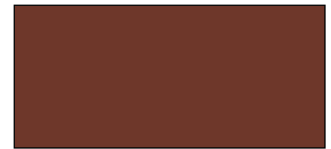
Charcoal Gray



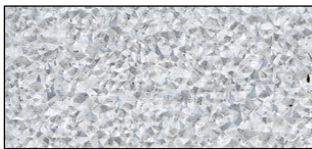
Colonial Red



Brite Red

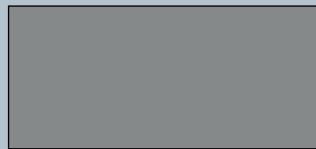


Terra Cotta



Galvalume® Plus

MILL FINISH



Silver Metallic ♦



Copper Metallic ♦

PREMIUM

♦ Available at additional cost.

Color	24 Gauge	Aluminum .040	Aluminum** .050	ISR*	IE*	SRI*
Almond	X			0.55	0.87	64
Bone White	X	X	X	0.70	0.85	75
Brite Red	X			0.49	0.84	55
Brownstone	X	X	X	0.38	0.85	40
Charcoal Gray	X			0.32	0.85	32
Coal Black	X	X	X	0.26	0.85	24
Classic Green	X			0.14	0.82	7
Colonial Red	X			0.22	0.86	20
Copper Metallic ♦	X			0.45	0.85	50
Galvalume® Plus	X			0.67	0.14	56
Harbor Blue	X			0.11	0.88	6
Hawaiian Blue	X			0.31	0.87	32
Hunter Green	X			0.08	0.86	2
Koko Brown	X	X	X	0.32	0.86	38
Light Stone	X			0.53	0.85	61
Medium Bronze	X	X	X	0.36	0.87	39
Midnight Bronze	X	X	X	0.28	0.86	27
Natural Patina	X			0.39	0.85	42
Silver Metallic ♦	X	X	X	0.54	0.80	61
Slate Gray	X	X	X	0.38	0.87	41
Snow White	X	X	X	0.63	0.85	75
Terra Cotta	X			0.35	0.87	37
Tundra	X			0.34	0.86	35

* Initial Solar Reflectance (ISR) * Initial Emissivity (IE) * Solar Reflectance Index (SRI)

Other finishes are available, including 16-ounce copper, stainless steel, bonderized metal, and mill finish aluminum.

Contact Duro-Last for information.

♦ Available at additional cost.

** Additional lead time (non-stock item).

Galvalume® Plus

Duro-Last® offers a mill finished Galvalume® with a two-sided, clear chromate/acrylic finish that simultaneously aids roll forming without the use of lubricants and eliminates unsightly handprints or stains resulting from handling and storage. The acrylic finish dissolves naturally over a period of time, and when left as is, allows for natural and even weathering.

Our Metal Products Are Environmentally-Friendly

Duro-Last products utilize metals with either Kynar 500® or Hylar 5000® resins, which provide superior color retention. These metal products are highly reflective and meet EPA ENERGY STAR® Roof Products Program performance criteria. Products made by Duro-Last are 100% recyclable.



Warranty

EXCEPTIONAL® Metals offers a finish and substrate warranty. Coating warranty varies for Brite Red, Coal Black, Copper Metallic, and Silver Metallic. Metallics are warranted for chip, crack, and peel only.

Oil canning is an aesthetic issue and is an inherent part of light gauge cold formed metal products. By using coil that has been processed properly, designing for thermal movement, following stringent specifications for installation and proper handling most oil canning can be eliminated. Oil canning is not grounds for coil/panel rejection.

Colors shown represent the actual color as closely as possible. To ensure exact color for final approval, a metal color chip is available.



800-248-0280
www.duro-last.com